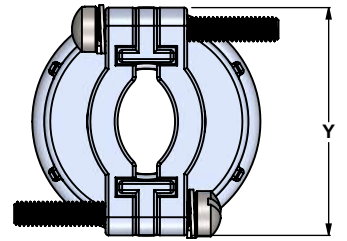
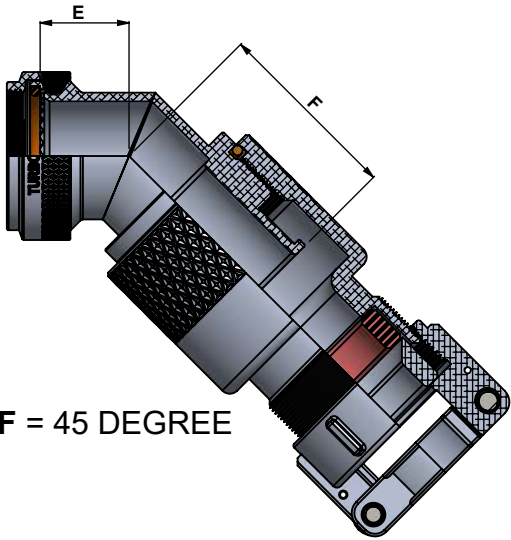


**CLAMP OPTION - TYPE A CLAMP**

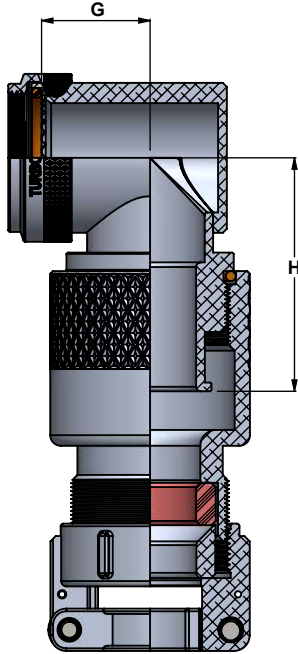


**\*\*FOR A-THREAD DIMENSIONS AND MAX ENTRY SIZE REFER PAGE-H**

**S = STRAIGHT**

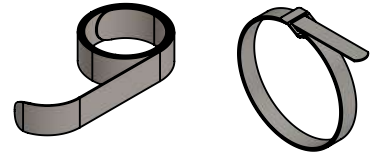


**F = 45 DEGREE**



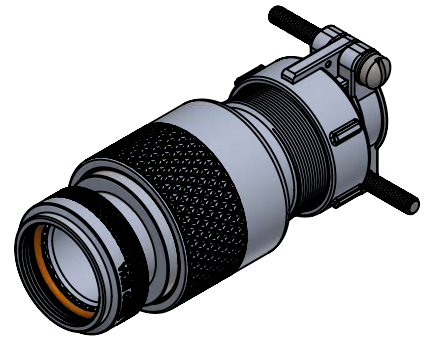
**N = 90 DEGREE**

**BANDING OPTIONS**



**S = CONSTANT FORCE SPRING      T = TERMINATION BAND**

FOR SELECTING SUITABLE TERMINATION ACCESSORY, GO TO ACCESSORIES SECTION IN CATALOG



**ORDERING INFORMATION**

**TB 160-01 - H 3 F VO - 17 12 - A - 6 - T**

**BRAND IDENTIFIER**  
**PRODUCT SERIES CODE**  
 (SEE PAGE - A)  
**CONNECTOR INTERFACE**  
 (SEE PAGE - B)  
**COUPLING RING OPTION**  
 (SEE PAGE - C)  
**ANGLE**  
 S = STRAIGHT  
 F = 45°  
 N = 90°  
**MATERIAL & FINISH**  
 (SEE PAGE - D)

**BANDING OPTION**  
 S = CF SPRING  
 T = TERMINATION BAND  
 (OMIT FOR NONE)  
**LENGTH CODE**  
 ONLY FOR STRAIGHT PARTS. OMIT FOR STANDARD LENGTH (L) - 2.00" (1/2" INCREMENT. FOR EXAMPLE 6 = 3 INCHES)  
**CABLE CLAMP TYPE**  
 A - MS3057 A  
 D - MS3057 D  
**CABLE CLAMP SIZE**  
 (SEE TABLE - II & III)  
**SHELL SIZE**  
 (SEE TABLE - I)

REVISIONS				DRAWN :	AD	DATE
REV NO.	REVISED BY	DATE OF REV	APPROVED BY	CHECKED :	AD	30-01-2020
01	VN	06-01-2021	AD	APPROVED :	MR	30-01-2020

THIS DRAWING IS COPYRIGHT AND THE PROPERTY OF TURBO INDIA INTERCONNECT SOLUTIONS. IT MUST NOT BE COPIED, USED FOR MANUFACTURE OR OTHERWISE DISCLOSED WITHOUT PRIOR WRITTEN CONSENT OF THE COMPANY.

UNLESS OTHERWISE SPECIFIED : ALL DIMENSIONS IN MILLIMETRES  
 GENERAL TOL : LINEAR : ± 0.10MM  
 ANGULAR : ± 2°

MATERIAL :	---	<b>REV.No</b> <b>01</b>
WEIGHT :	---	
<b>ASSEMBLY USED ON:</b> ---		

<b>DESCRIPTION :</b> <b>BAND-IN-A-CAN ADAPTERS - ENVIRONMENTAL</b>	
<b>PART NUMBER / SERIES:</b> <b>SERIES 160-01</b>	<b>PAGE:NO</b> <b>39</b>

**TABLE - I SHELL SIZE**

CONNECTOR DESIGNATOR			RING DIMENSION	ELBOW DIMENSIONS			
A	F & D	H	Ø C MAX	E MAX	F MAX	G MAX	H MAX
08	08	09	22.48	21.00	35.10	23.80	38.10
10	10	11	25.65	21.60	35.80	25.30	39.40
12	12	13	28.83	22.20	36.30	26.90	40.90
14	14	15	32.00	22.70	37.10	28.10	42.70
16	16	17	35.18	23.40	37.60	29.70	44.20
18	18	19	38.35	23.80	37.80	30.70	44.70
20	20	21	41.53	24.40	38.40	32.20	46.20
22	22	23	44.70	25.10	39.40	33.70	48.30
24	24	25	47.88	25.70	40.10	35.20	50.00

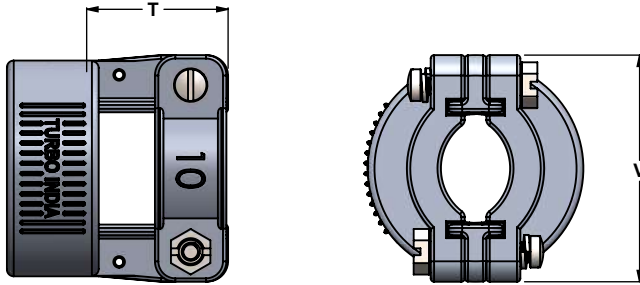
**TABLE-II  
TYPE A - CABLE CLAMP SIZE**

DASH NO	Ø M MIN	Ø M MAX	Z MAX	Y MAX
04	4.80	7.90	11.10	23.00
06	7.10	11.10	12.70	27.80
08	9.80	14.30	14.30	30.10
10	9.50	15.90	14.30	32.50
12	11.10	19.10	14.30	38.10
16	15.90	23.80	16.70	43.70

**TABLE- III  
TYPE D - CABLE CLAMP SIZE**

DASH NO	Ø M MIN	Ø M MAX	T MAX	V MAX
04	3.20	7.90	19.80	24.30
06	6.40	11.10	19.80	29.10
08	9.80	14.30	19.80	33.80
10	8.90	15.90	19.80	33.80
12	12.70	19.10	20.60	39.40
16	15.90	23.80	23.00	45.00

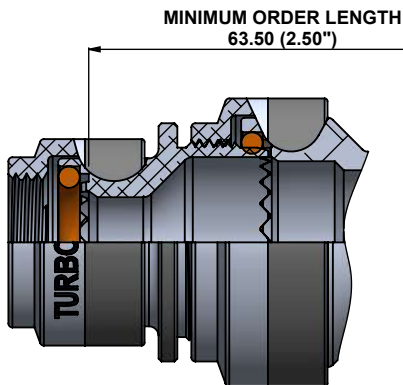
**CLAMP OPTION - TYPE D CLAMP**



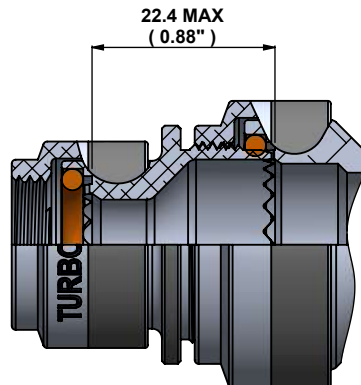
1. WHEN MAXIMUM CABLE ENTRY IS EXCEEDED , STYLE-2 WILL BE SUPPLIED . IN THAT CONDITION, DIMENSIONS E,F,G AND H WILL NOT APPLY.
2. FOR ANY KIND OF CUSTOMISATION ON THIS BACKSHELL, FOR TERMINATION BANDS AND OTHER ACCESSORIES REACHOUT TO US ON [sales@turboindia.co.in](mailto:sales@turboindia.co.in)

**TABLE- IV  
CABLE ENTRY**

DASH NO	Ø K+0.20
02	3.20
03	4.80
04	6.40
05	7.90
06	9.50
07	11.10
08	12.70
09	14.30
10	15.90
11	17.50
12	19.10
13	20.60
14	22.20
15	23.80
16	25.40
17	27.00
18	28.60
20	31.80
22	34.90
24	38.10



**STYLE -2  
STRAIGHT**



**STYLE -2  
45° & 90°**

		DATE
DRAWN :	AD	30-01-2020
CHECKED :	AD	30-01-2020
APPROVED :	MR	30-01-2020



**TURBO INDIA**  
INTERCONNECT SOLUTIONS  
#114, 1st Floor, P C Industrial Estate, Kamakshipalya,  
Magadi Rd, Bangalore 560 079, Karnataka, India

THIS DRAWING IS COPYRIGHT AND THE PROPERTY OF TURBO INDIA INTERCONNECT SOLUTIONS. IT MUST NOT BE COPIED, USED FOR MANUFACTURE OR OTHERWISE DISCLOSED WITHOUT PRIOR WRITTEN CONSENT OF THE COMPANY.

UNLESS OTHERWISE SPECIFIED : ALL DIMENSIONS IN MILLIMETRES  
GENERAL TOL:  
LINEAR : ± 0.10MM  
ANGULAR : ± 2°

MATERIAL :	---	<b>REV.No 01</b>
WEIGHT :	---	
<b>ASSEMBLY USED ON:</b>		
---		

<b>DESCRIPTION :</b>	
<b>BAND-IN-A-CAN ADAPTERS - ENVIRONMENTAL</b>	
<b>PART NUMBER / SERIES:</b>	<b>PAGE:NO</b>
<b>SERIES 160-01</b>	<b>40</b>